

Table of Contents

Package Contents.....	2	Software Install for Windows OS Users.....	6
Product Overview.....	2	Software Operation for Windows OS Users.....	6
Product Specifications.....	2	WINDOWS - Primary Software Functions.....	7
Product Design.....	3	MAC - Administration Access Instructions.....	8
Product Diagram.....	4	Software Install for Mac OS Users.....	8
Quick Start Instructions.....	5	Software Operation for Mac OS Users.....	8
WINDOWS - Administration Access Instructions....	6	MAC - Primary Software Functions.....	9
Software Download.....	6	Safety.....	11

Package Contents

- LLTSW5-G 5-Bay Charging Locker (Qty 1)
- Power cable (Qty 1)
- Micro USB (Qty 1)
- User manual (Qty 1)

Product Overview

Luxor's LLTSW5-G Charging Locker for Mobile Devices stores, charges, and secures mobile electronics such as laptops, Chromebooks, tablets, and phones. Offering programmable keypads, it's designed for schools, libraries, and other applications where multiple users need temporary, keyless access to locking compartments.

Product Specifications

Storage Capacity	5 Bays	Product Weight	46.3 lbs.
Charging Capability	1 AC Outlet, 1 USB Port per Bay	Lock Type	1 Digital Keypad per Bay with USB-accessed Administrator Override
Devices Supported	Phones, Chromebooks, Tablets, and Laptops with up to 17" Screens	AC Charging	C100~125V/10A
Outside Dimensions	17.5"W x 19"D x 22.6"H	USB Charging	DC5V/2.4A
Compartment Inner Dimensions	12.8"W x 17.8"D x 4.3"H	Cord Length	6'
Packaging Dimensions	22.9"W x 22.7" D x 24.3" H	Expandability	10 Bays (requires additional LLTSW5-G locker and LLTSW5-DAISY daisy chain kit)*
Packaging Weight	57.3 lbs.	Safety Features	Inline Push Button Breaker

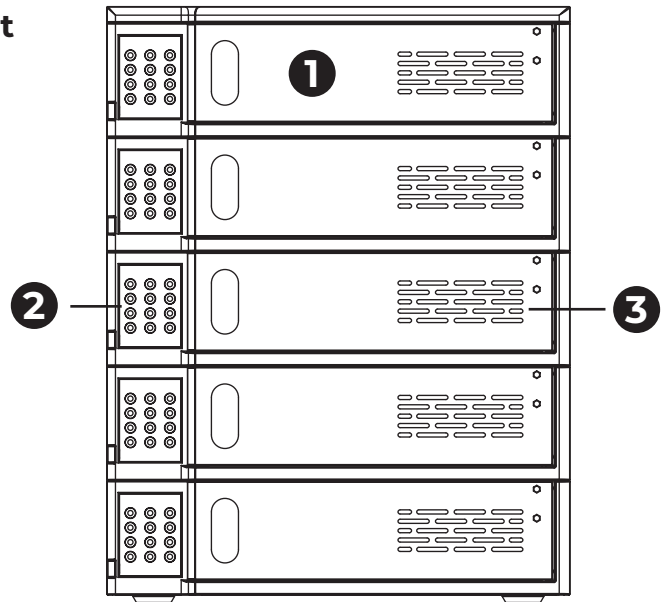
***NOTE:** An optional bracket kit must be ordered separately to join the lockers when they are being stacked on top of each other. A daisy chain power cable is also included in the kit for connecting the lockers. Do not stack more than two (2) lockers.

Product Design

Front

1. Compartment Doors
2. Access Keypads
3. Ventilation Holes

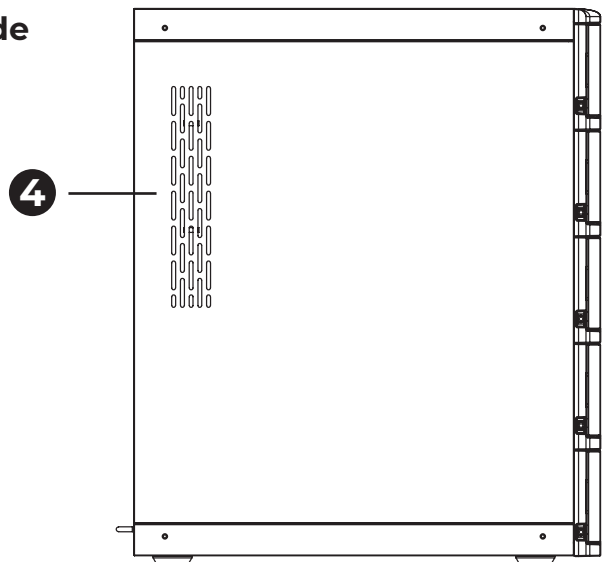
Front



Side

4. Ventilation Holes

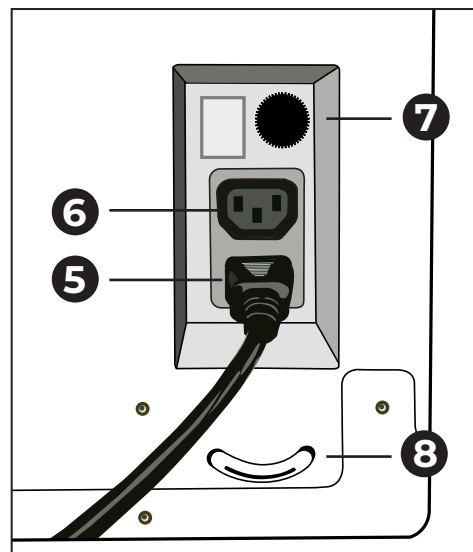
Side



Rear

5. Power Cord Connection
6. Daisy Chain Power Connection
7. Fuse
8. Anchor Point for Cable Lock

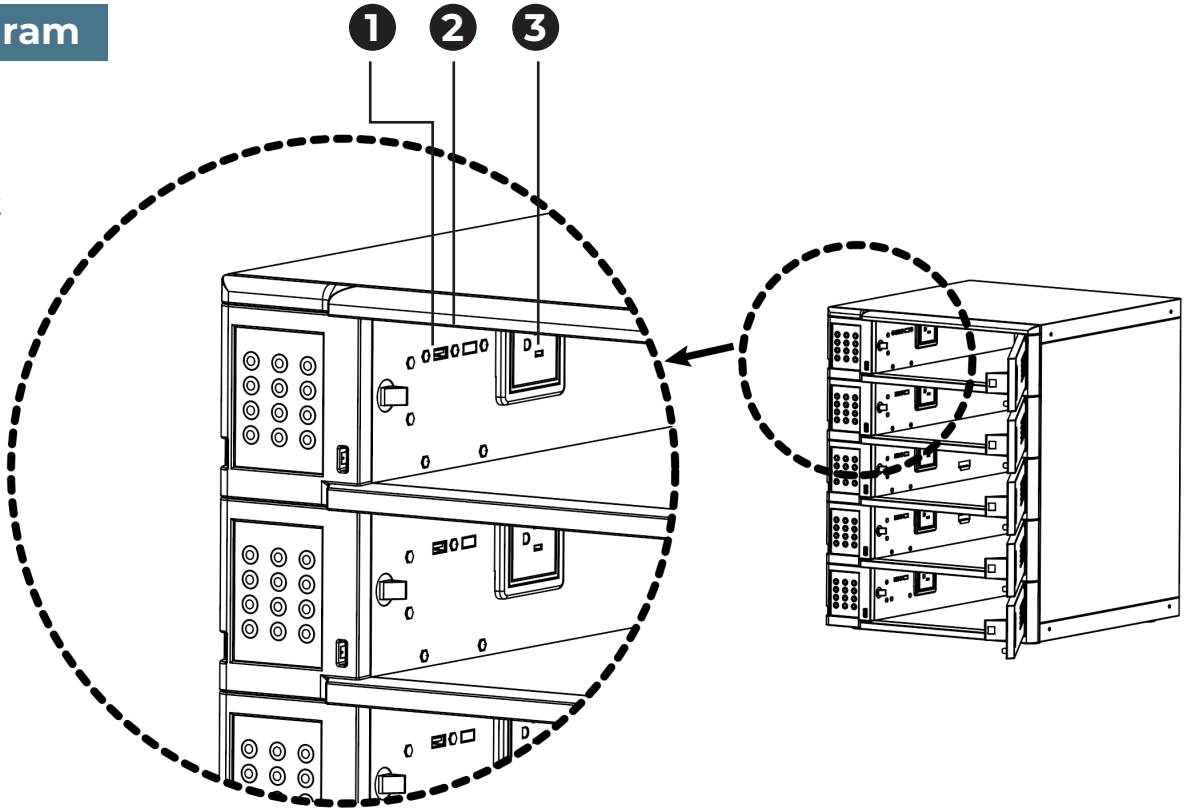
Rear



Product Diagram

Interior

1. USB Port
2. Interior Light (not shown)
3. AC Outlet



Keypad



Door Lock Status Indicator

- Red = Locked
- Solid Green = Unlocked
- Blinking Green = Able to enter code



Keypad Indicator

- Lights when keys are pressed



Door Status Indicator

- Red = Closed
- Green = Open



USB Charging Indicator

- Red = Charging
- Green = Charged



Unlock Button

- Push to unlock a compartment



Lock Button

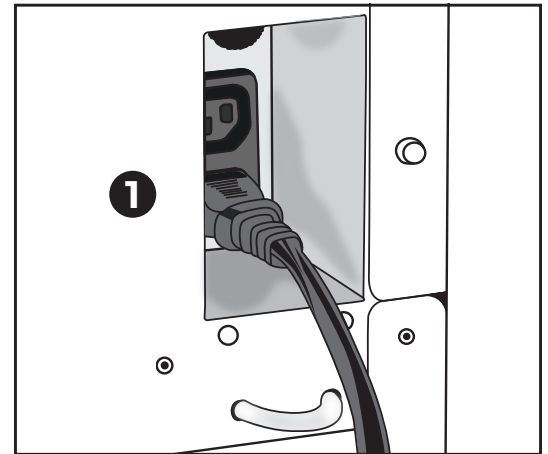
- Push to lock a compartment




Quick Start Instructions

To Power Up:

1. Insert the female end of the power cord into the power cord connection on the rear of the locker.
2. Plug the male end of the power cord into an available outlet.
3. Lights on the keypads will illuminate to indicate the locker has power.



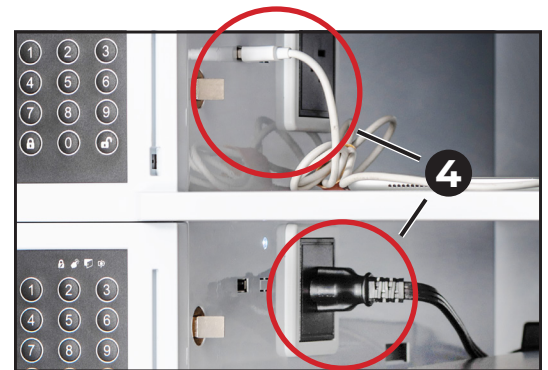
To Store, Charge, and Lock an Item:

1. Press the  unlock button on any keypad.
2. Open the door next to the keypad.
3. Place item(s) into the open compartment.
4. Plug item(s) into the USB port and/or AC outlet as needed.
5. Close the door.
6. When the door lock status indicator blinks green, enter a **4-digit PIN** of your choice.




NOTE:

- A) If the door lock status indicator shows solid green, press the unlock button and repeat step 6.
- B) If the door lock status button continues to blink green after entering a PIN, press the lock button.
- C) If the door is successfully locked, the door lock status indicator will show solid red.



To Unlock a Stored Item:

1. Enter your **4-digit PIN** on the keypad next to the locked compartment you wish to access.
2. Press the  unlock button.
3. Open the door.

NOTE: If a PIN is forgotten, administrator access will be needed to open the compartment.

WINDOWS - Administration Access Instructions

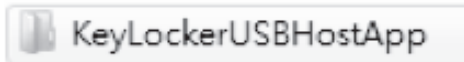
For administration access on Luxor's LLTSW5-G Charging Locker for Mobile Devices, the KeyLocker (PC) or LockerAdmin (Mac) software must be installed on a USB-equipped PC or Mac computer. Once installed, the administrator can plug into the micro USB port on the side of each keypad to unlock, inspect, reset, and perform other functions with the locking compartments.

To Download KeyLocker or LockerAdmin Software:

1. Visit <https://luxorfurn.com/5-bay-charging-locker-for-mobile-devices-1.html>.
2. Scroll to the bottom of page and find "Software Download (Keylocker USB Host App)".
3. Click the appropriate version for your operating system (Mac or Windows).
4. Open the downloaded zip file.

Software Install for **WINDOWS OS** Users

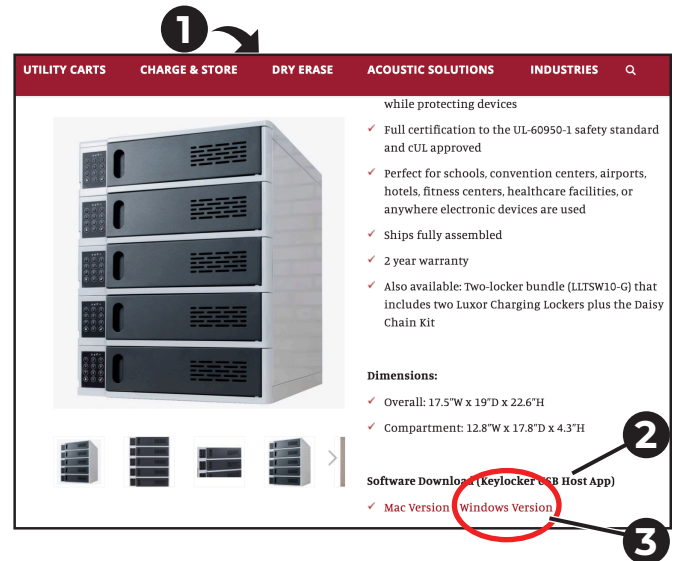
1. Double click "KeyLockerUSBHostApp".



2. Click "Next" after the startup wizard pops up.
3. Choose the target drive and folder to place the software, then click "Next" to proceed.
4. Click "Install" to begin the installation process (a status bar will show the installation process).
5. After installation is complete, click "Finish".

Software Operation for **WINDOWS OS** Users

1. Connect your computer with the micro USB port on the side of the keypad corresponding to the locker you wish to access.
2. Double click the "KeyLockerUSBHostApp" icon to run the software.
3. When the software starts, you will see an administration window open.
4. Click on one of the four following functions from the menu:
 - Inspect, Unlock Door Only
 - Reset, Empty User Password and Reset Status to Available
 - Set Inspect Code
 - Set Reset Code



WINDOWS - Primary Software Functions

Inspect, Unlock Door Only

Choose this function when you need to access a compartment without disabling/resetting a user-created passcode.

1. Enter your inspect code in the “Inspect Code” field (default code is 12345678).
2. Click “Run” to open the compartment.
3. Close the door when finished inspecting the compartment (the compartment will re-lock, and the user-created passcode will still be active).

Reset, Empty User Password and Reset Status to Available

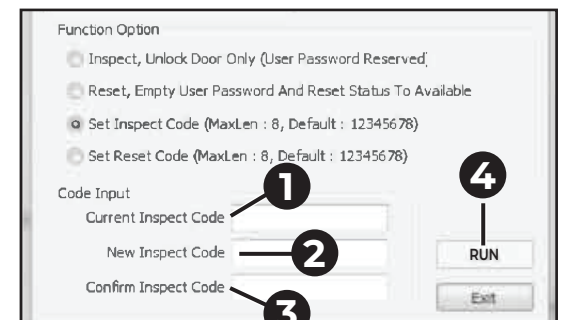
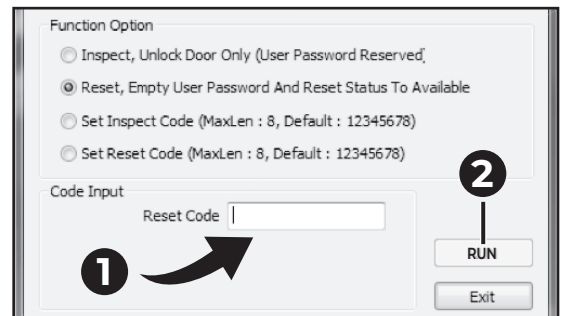
Choose this function when you need to disable/reset a user-created passcode and make the compartment available for a new user.

1. Enter your reset code in the “Reset Code” field (default code is 12345678).
2. Click “Run” to open the compartment and reset the user-created passcode.
3. Close the door when finished inspecting the compartment (the compartment will latch shut, and the door can be re-opened by pressing the unlock button on the corresponding keypad).

Set Inspect Code

Choose this function if you wish to change the inspect code to another code of your choosing (it can be set to match or be different than the reset code).

1. Enter your inspect code in the “Current Inspect Code” field (if one has never been set, the default code is 12345678).
2. Enter a new inspect code in the “New Inspect Code” field (up to 8 digits).
3. Re-enter the new inspect code in the “Confirm Inspect Code” field (up to 8 digits).
4. Click “Run” (a “Successful” message will pop up if the code was successfully reset).

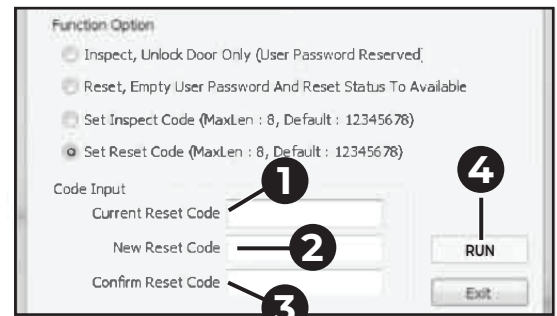


WINDOWS - Primary Software Functions Continued

Set Reset Code

Choose this function if you wish to **change the reset code** with another code of your choosing (it can be set to match or be different than the inspect code).

1. Enter your reset code in the “Current Reset Code” field (if one has never been set, the default code is 12345678).
2. Enter a new reset code in the “New Reset Code” field (up to 8 digits).
3. Re-enter the new reset code in the “Confirm Reset Code” field (up to 8 digits).
4. Click “Run” (a “Successful” message will pop up if the code was successfully reset).

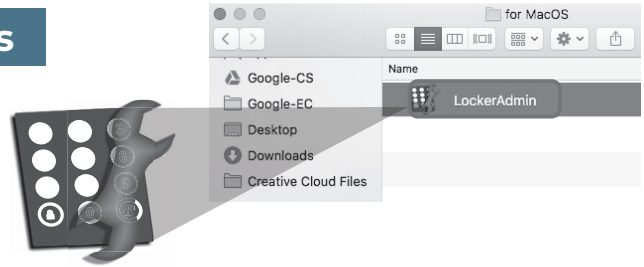


IMPORTANT: If changing a reset or inspect code, take care to record the code and store it in a safe place.

MAC - Administration Access Instructions

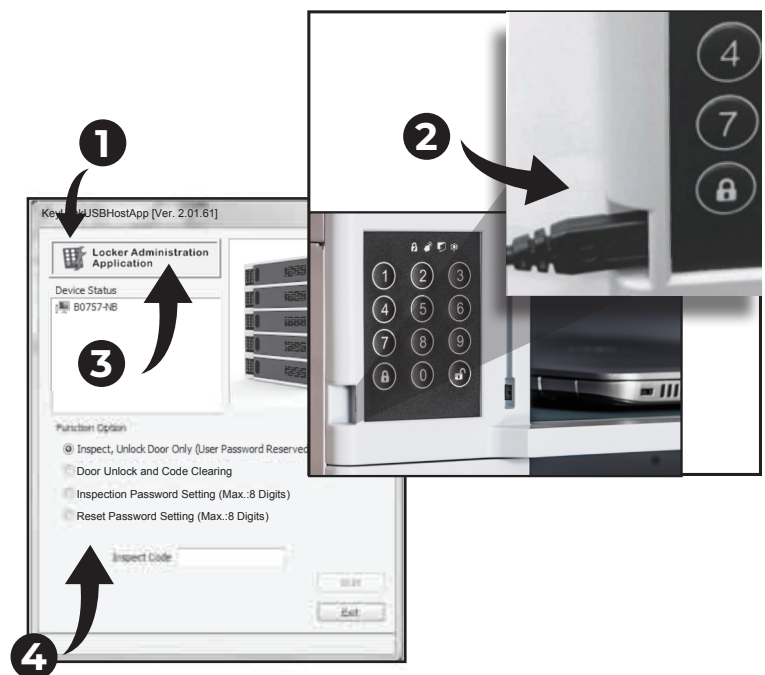
Software Install for MAC OS Users

1. Locate the downloaded file “LockerAdmin”.
2. Place the file in your Applications folder.
3. If desired, click the LockerAdmin icon in the Applications folder, then drag it into your Dock (at the bottom of your desktop) to create a shortcut.



Software Operation for MAC OS Users

1. Double click the “LockerAdmin” icon to run the software.
2. Connect your computer with the micro USB port on the side of the keypad corresponding to the locker you wish to access.
3. When the software starts, you will see an administration window open.
4. Click on one of the four following functions from the menu:
 - Inspect, Unlock Door Only
 - Door Unlock and Code Clearing
 - Inspection Password Setting
 - Reset Password Setting

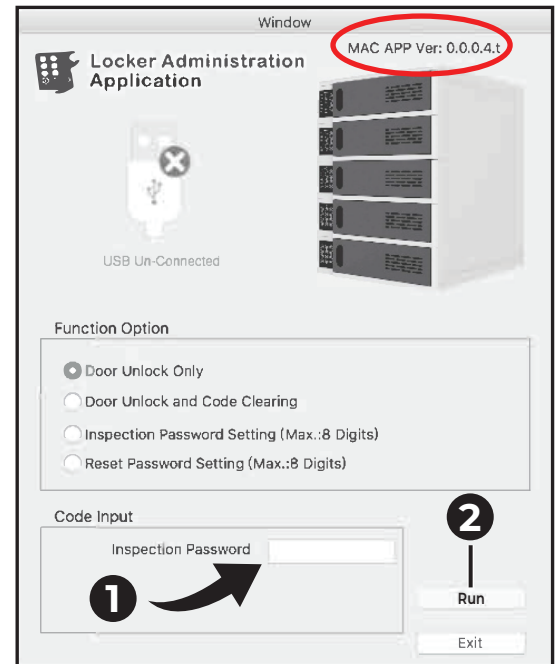


MAC - Primary Software Functions

Inspect, Unlock Door Only

Choose this function when you need to access a compartment without disabling/resetting a user-created passcode.

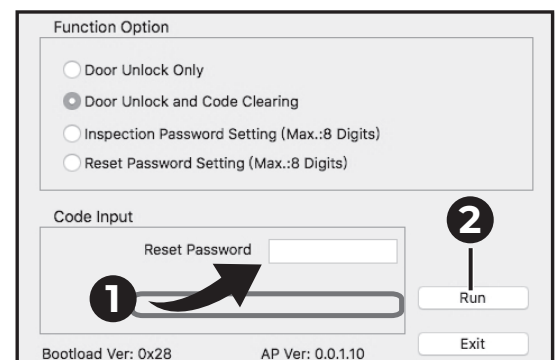
1. Enter your inspection password in the “Inspection Password” field (default code is 12345678).
2. Click “Run” to open the compartment.
3. Close the door when finished inspecting the compartment (the compartment will re-lock, and the user-created passcode will still be active).



Door Unlock and Code Clearing

Choose this function when you need to disable/reset a user-created passcode and make the compartment available for a new user.

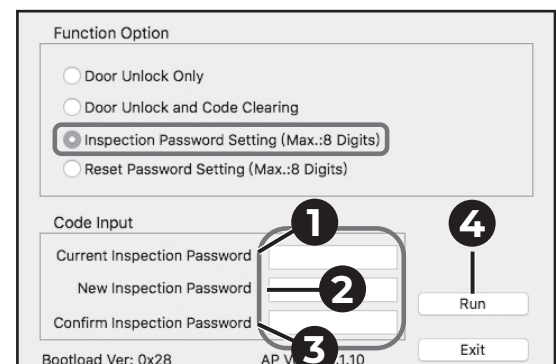
1. Enter your reset password in the “Reset Password” field (default code is 12345678).
2. Click “Run” to open the compartment and reset the user-created passcode.
3. Close the door when finished inspecting the compartment (the compartment will latch shut, and the door can be re-opened by pressing the unlock button on the corresponding keypad).



Inspection Password Setting

Choose this function if you wish to change the inspection password to another password of your choosing (it can be set to match or be different than the reset password).

1. Enter your current inspection password in the “Current Inspection Password” field (if one has never been set, the default password is 12345678).
2. Enter a new inspection password in the “New Inspection Password” field (up to 8 digits).
3. Re-enter the new inspection password in the “Confirm Inspection Password” field.
4. Click “Run” (a “Successful” message will pop up if the code was successfully reset).



MAC - Primary Software Functions Continued

Inspection Password Setting

Choose this function if you wish to change the inspection password to another password of your choosing (it can be set to match or be different than the reset password).

1. Enter your current inspection password in the “Current Inspection Password” field (if one has never been set, the default password is 12345678).
2. Enter a new inspection password in the “New Inspection Password” field (up to 8 digits).
3. Re-enter the new inspection password in the “Confirm Inspection Password” field.
4. Click “Run” (a “Successful” message will pop up if the code was successfully reset).

If You Forget a Reset or Inspection Password

1. Select “Reset Password Setting”.
2. In all caps, type “HOW DO” into the **Current Reset Password** field.
3. In all caps, type “YOU TURN” into the **New Reset Password** field.
4. In all caps, type “THIS ON” into the **Confirm Reset Password** field.
5. Click “Run”.
6. A set of MAC Addresses will be generated. Provide these to your vendor or retailer.

The vendor will also provide **three sets of passwords**. Insert them separately into the Current Reset Password, New Reset Password, and Confirm Reset Password fields.

7. Click “Factory Reset”.

IMPORTANT: If changing a reset or inspection password, take care to record the password and store it in a safe place.

Safety



ELECTRIC SHOCK
Operate Carefully

ELECTRICAL WARNINGS

- Do not unplug or handle the power cord or operate the charging locker with wet hands.
- Do not use power cords that are frayed or damaged.
- Do not unplug the cord by pulling on the cable.



GENERAL SAFETY WARNINGS

- This product is designed for indoor use only.
- This product is not designed to be operated by children.
- Do not sit, stand, or climb on the product.
- Move the product with caution.
- Keep the product away from liquids.
- Keep the ventilation holes unblocked for proper air circulation.
- Do not place a TV or monitor on top of the product.
- Do not use the product to store liquids or cleaning supplies.
- Keep the doors closed and locked with not in use.
- Disconnect the power cable from the wall before moving the product.

WARNING: This product must only be used for its intended purpose in accordance with these operating instructions. Failure to observe the following notices can result in fire, injury, death by electric shock or equipment damage.